

Features / Benefits:**Digital Instrumentation Panel**

- Full digital technology for improved accuracy with additional redundant safety built in.
- UL Listed and FM Approved for worldwide installation.
- Low RF emissions - meets CISPR II Class B Radiated Emissions, so it won't interfere with critical building electronics.
- UL-4X enclosure

Full 2-year warranty on all engine and upfit components*

- Factory-backed support / service

Powder coated or painted steel upfit components to increase corrosion resistance**Heavy duty cooling systems and standard copper heat exchangers**

- Increased corrosion resistance

Wastegated turbochargers

- Improved engine response across torque curves

Forged steel crankshaft with integral counterweights

- Higher power output from a compact size

Full authority electronic controls with isochronous governor on electronic engines

- Precise speed control $\pm 0\%$
- Constant speed from churn to 150% flow

Standard Equipment:

- Declaration of Incorporation - Machinery Directive 2006/42/EC Compliant
- Fuel pre-filters
- Air cleaner, canister type
- Electrical, 12V, negative ground*
- Heat exchanger cooling system
- Coolant heater, 110V or 220V
- NFPA 20 instrument panel, mounted
- Overspeed switch
- Dual-starter contactors, NFPA 20
- Red paint finish
- SAE flywheel
- Modbus RTU485 for SCADA equipment

Optional Equipment:

- Air cleaner, HD industrial
- Electrical, 24V, negative ground*
- Batteries, cables, battery racks
- Cooling loops for horizontal & vertical pumps - FM approved
- Seawater cooling loops - FM approved
- Custom base rail options for horizontal & vertical pumps
- Base rail extension, 24" for controller mount
- Exhaust flex connector, NPT, ASA, flange or slotted cuff
- Exhaust silencer
- Cummins Encompass Extended Coverage (base engine only)
- UL Listed drive shafts up to 480 HP
- Stub shafts
- Torsional couplings
- Radiator cooled (non-listed)
- Air intake shutoff valve (UL listed only)
- Duplex fuel filters
- Duplex lube filters
- Marine grade urethane clear coat
- Some manuals are offered in Spanish, French, German, and Russian. Call for details

Enclosure Options:

- Motorized air intake and discharge louvers
- Aluminum, galvanized or 316 stainless steel construction offered as options for corrosive environment
- Urethane clear coat finish offered as option for corrosive environment
- Foam insulation for sound attenuation
- Brackets for mounting silencer on roof of enclosure

Features and benefits

- Finish: powder coated paint, RAL 3001, Signal Red
- All hardware is stainless steel
- All doors keyed alike
- Material: 12 gauge roof, 14 gauge sides
- DC fans provided for air discharge
- Fixed air intake louvers
- Weather protective seals around doors
- Enclosure can be designed to mount to fire pump skid base
- Bulkhead to plumb water and fuel



Cummins Fire Power
875 Lawrence Drive
De Pere, WI 54115

Phone: 920 337 9750
Fax: 920 338 5990
cumminsfirepower.com

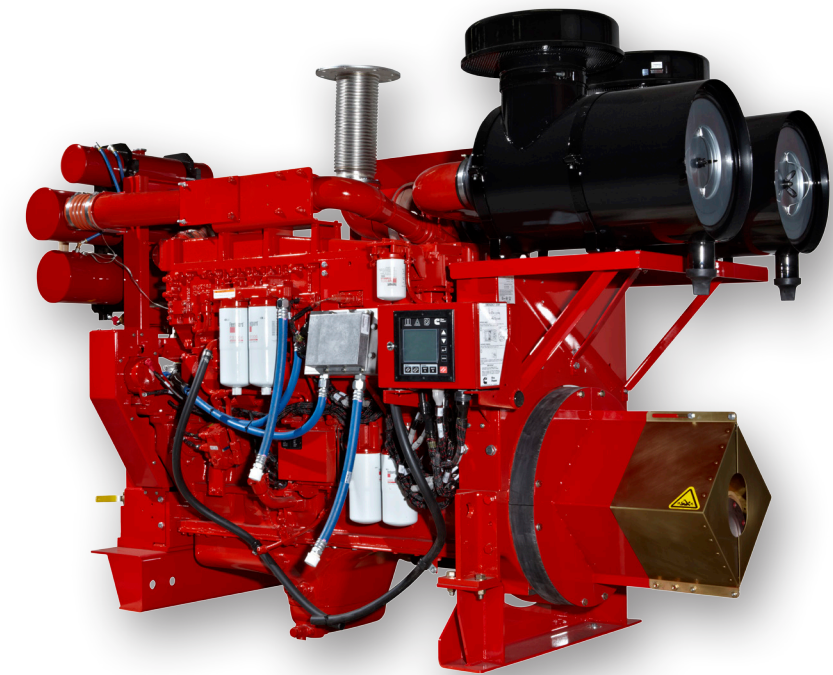


Rev 6/15
© 2015 Cummins Inc.



**Fire
Power**

Cummins Diesel Fire Pump Drivers 100-2000 HP (75 kW-1491 kW)

**One Cummins.**

**Cummins Engines, NFPA 20 upfit by Cummins Fire Power
and supported by Cummins Distributors worldwide**

Cummins Fire Power is an established manufacturer of premium custom diesel fire pump engine packages specializing in the design, development and distribution of NFPA 20 compliant and UL-FM certified diesel fire pump drivers. Cummins Fire Power is the premiere choice among leading OEM's, contractors and engineers in the fire protection industry.

* The 11E, 15E, 23E, 30E & 50 are only available with 24 volt systems.

Midrange and Heavy Duty Models

Model	RPM:	1470	1760	1900	2100	2350	2600	EPA Tier	UL	FM	U.S. / Int'l
	HP	HP	HP	HP	HP	HP	HP	Level			Install.
CFP5E-F10	84	95	98	101	105	104	T3	T3	Y	Y	U.S. / Int'l
CFP5EVS-F10	84	95	98	101	105	104	T3	T3	N	Y	U.S. / Int'l
CFP5E-F20	94	107	110	113	118	117	T3	T3	Y	Y	U.S. / Int'l
CFP5EVS-F20	94	107	110	113	118	117	T3	T3	N	Y	U.S. / Int'l
CFP5E-F30	104	118	121	125	130	129	T3	T3	Y	Y	U.S. / Int'l
CFP5EVS-F30	104	118	121	125	130	129	T3	T3	N	Y	U.S. / Int'l
CFP5E-F40	113	123	129	136	143	141	T3	T3	Y	Y	U.S. / Int'l
CFP5EVS-F40	113	123	129	136	143	141	T3	T3	N	Y	U.S. / Int'l
CFP5E-F50	113	129	135	146	150	148	T3	T3	Y	Y	U.S. / Int'l
CFP5EVS-F50	113	129	135	146	150	148	T3	T3	N	Y	U.S. / Int'l
CFP59-F10	100	115	-	-	-	-	T1	T1	Y	Y	Int'l
CFP59-F15	-	-	-	122	126	126	T1	T1	Y	Y	Int'l
CFP59-F20	130	149	-	-	-	-	T1	T1	Y	Y	Int'l
CFP59-F25	-	-	-	140	140	140	T1	T1	Y	Y	Int'l
CFP59-F40	150	171	-	-	-	-	T1	T1	Y	Y	Int'l
CFP59-F50	164	188	-	-	-	-	T1	T1	Y	Y	Int'l
CFP7E-F10	153	175	162	171	172	174	T3	T3	Y	Y	U.S. / Int'l
CFP7EVS-F10	153	175	162	171	172	174	T3	T3	N	Y	U.S. / Int'l
CFP7E-F20	166	190	176	185	187	189	T3	T3	Y	Y	U.S. / Int'l
CFP7EVS-F20	166	190	176	185	187	189	T3	T3	N	Y	U.S. / Int'l
CFP7E-F30	177	205	190	200	201	204	T3	T3	Y	Y	U.S. / Int'l
CFP7EVS-F30	177	205	190	200	201	204	T3	T3	N	Y	U.S. / Int'l
CFP7E-F40	192	220	204	215	216	219	T3	T3	Y	Y	U.S. / Int'l
CFP7EVS-F40	192	220	204	215	216	219	T3	T3	N	Y	U.S. / Int'l
CFP7E-F50	205	235	218	229	231	234	T3	T3	Y	Y	U.S. / Int'l
CFP7EVS-F50	205	235	218	229	231	234	T3	T3	N	Y	U.S. / Int'l
CFP7E-F60	218	250	232	244	245	249	T3	T3	Y	Y	U.S. / Int'l
CFP7EVS-F60	218	250	232	244	245	249	T3	T3	N	Y	U.S. / Int'l
CFP83-F10	176	202	-	-	-	-	T1	T1	Y	Y	Int'l
CFP83-F20	197	227	-	-	-	-	T1	T1	Y	Y	Int'l
CFP83-F30	216	252	-	-	-	-	T1	T1	Y	Y	Int'l
Model	RPM:	1470	1760	1900	2100	2300	EPA Tier	UL	FM	U.S. / Int'l	
	HP	HP	HP	HP	HP	HP	Level			Install.	
CFP9E-F10	212	260	275	246	212	-	T3	T3	Y	Y	U.S. / Int'l
CFP9EVS-F10	212	260	275	246	212	-	T3	T3	N	Y	U.S. / Int'l
CFP9E-F20	230	282	299	268	230	-	T3	T3	Y	Y	U.S. / Int'l
CFP9EVS-F20	230	282	299	268	230	-	T3	T3	N	Y	U.S. / Int'l
CFP9E-F30	248	305	323	289	248	-	T3	T3	Y	Y	U.S. / Int'l
CFP9EVS-F30	248	305	323	289	248	-	T3	T3	N	Y	U.S. / Int'l
CFP9E-F40	271	327	347	311	267	-	T3	T3	Y	Y	U.S. / Int'l
CFP9EVS-F40	271	327	347	311	267	-	T3	T3	N	Y	U.S. / Int'l
CFP9E-F50	289	350	360	332	285	-	T3	T3	Y	Y	U.S. / Int'l
CFP9EVS-F50	289	350	360	332	285	-	T3	T3	N	Y	U.S. / Int'l
CFP9E-F60	305	359	365	355	304	-	T3	T3	Y	Y	U.S. / Int'l
CFP9EVS-F60	305	359	365	355	304	-	T3	T3	N	Y	U.S. / Int'l
CFP11E-F20	347	401	-	345	-	-	T2	T2	Y	Y	Int'l

High Horsepower Models

Model	RPM:	1470	1760	1900	2100	2250	EPA Tier	UL	FM	U.S. / Int'l	
	HP	HP	HP	HP	HP	HP	Level			Install.	
CFP15E-F10	382	460	488	488	380	-	T3	T3	Y	Y	U.S. / Int'l
CFP15E-F20	410	494	525	525	409	-	T3	T3	Y	Y	U.S. / Int'l
CFP15E-F30	450	542	575	575	448	-	T3	T3	Y	Y	U.S. / Int'l
CFP15E-F40	477	575	610	610	475	-	T3	T3	Y	Y	U.S. / Int'l
CFP15E-F50	-	610	-	-	-	-	T2	T2	Y	Y	Int'l
CFP15E-F60	-	650	-	-	-	-	T2	T2	Y	Y	Int'l
CFP15E-F70	-	686	-	-	-	-	T2	T2	Y	Y	Int'l
CFP15E-F7NL	-	755	-	-	-	-	T2	T2	N	N	U.S. / Int'l
CFP23E-F10	630	698	-	-	-	-	T2	T2	Y	Y	Int'l
CFP23E-F15	-	-	722	751	617	-	T2	T2	N	N	Int'l
CFP23E-F20	681	753	-	-	-	-	T2	T2	Y	Y	U.S. / Int'l
CFP23E-F25	-	-	781	812	666	-	T2	T2	N	N	U.S. / Int'l
CFP23E-F30	724	801	-	-	-	-	T2	T2	Y	Y	U.S. / Int'l
CFP23E-F35	-	-	830	864	709	-	T2	T2	N	N	U.S. / Int'l
CFP23E-F40	747	850	-	-	-	-	T2	T2	Y	Y	U.S. / Int'l
CFP23E-F50	752	925	-	-	-	-	T2	T2	Y	Y	U.S. / Int'l
CFP23E-F60	817 (NL)	1000	-	-	-	-	T2	T2	Y*	Y*	U.S. / Int'l
CFP23E-F70	852 (NL)	1075	-	-	-	-	T2	T2	Y*	Y*	U.S. / Int'l
CFP30E-F10	935	1064	1077	984	-	-	T1	T1	N	N	Int'l
CFP30E-F20	1017	1158	1173	1071	-	-	T1	T1	N	N	Int'l
CFP30E-F30	1100	1253	1268	1158	-	-	T1	T1	N	N	Int'l
CFP30E-F40	1183	1347	1364	1245	-	-	T1	T1	N	N	Int'l
Model	RPM:	1470	1500	1760	1800	EPA Tier	UL	FM	U.S. / Int'l		
	HP	HP	HP	HP	HP	Level			Install.		
CFP50-F1	1353	1375	-	-	-	-	-	-	N	N	Int'l
CFP50-F2	1473	1497	-	-	-	-	-	-	N	N	Int'l
CFP50-F3	1593	1619	-	-	-	-	-	-	N	N	Int'l
CFP50-F4	1713	1741	-	-	-	-	-	-	N	N	Int'l
CFP50-F10	-	-	1566	1594	-	-	T1	T1	N	N	Int'l
CFP50-F20	-	-	1705	1736	-	-	T1	T1	N	N	Int'l
CFP50-F30	-	-	1844	1877	-	-	T1	T1	N	N	Int'l
CFP50-F40	-	-	1982	2018	-	-	T1	T1	N	N	Int'l

Y = Yes, N = No, NL = Not Listed * Listed at 1760 RPM only. See online warranty brochure for details. VS notation indicates variable speed pressure limiting device.

Cummins Fire Power Website Features

cumminsfirepower.com

- Engine selector tool
- Product registration
- Exhaust sizing tool
- Service locator
- Start-up information
- Downloadable drawings, wiring diagrams, and manuals
- Cummins Fire Power contact information